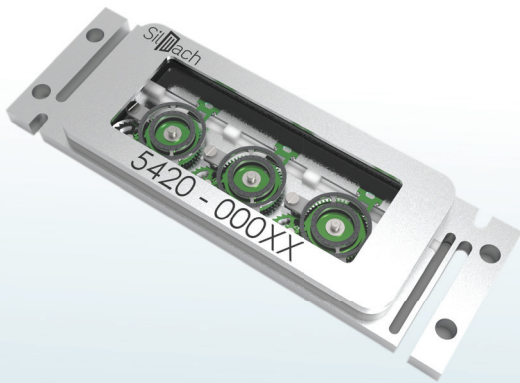
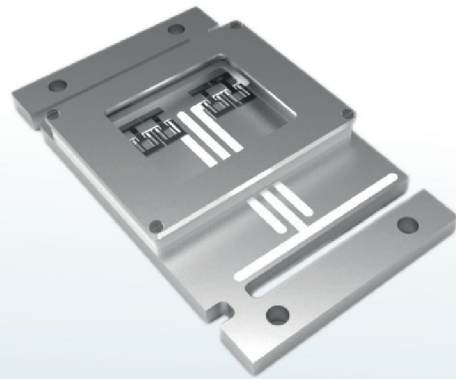


Structural Health Monitoring Hybrids MEMS

Fatigue monitoring
(repeated loading)



Critical event sensors
(abnormal events)



ChronoMems

A **Stick and Forget** monitoring sensor!



Wireless reading

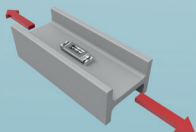
- Direct **optical** reading
- Contactless **passive RFID**
- **Long distance wireless** communication
- **Data logger**...



Energyless sensors

Applications:

Stress



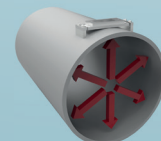
Thermal



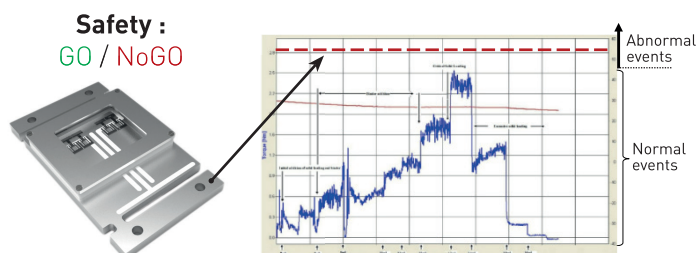
Shock



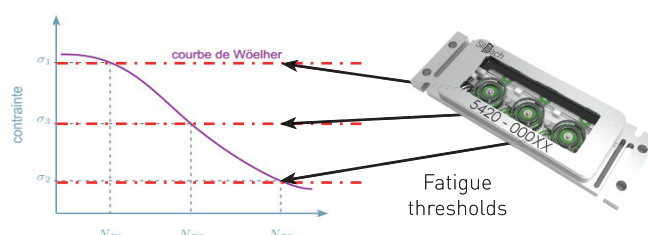
Pressure



Critical event sensors



Fatigue monitoring



ChronoMEMS ® specificities and advantages:

- » **Simple to install:** the sensor itself and that's all
- » Stick and forget: **no maintenance**
- » Unlimited lifetime (because **no battery**)
- » **No drift, no need for recalibration**
- » Temperature range: **up to 600 °C** (in theory, tested : -40°C to 160°C)
- » **Efficient information:** no need for time-consuming data post-treatment
- » **Inviolable, impossible to fudge or modify** (useful in case of dispute or arbitrage)
- » No risk of interpretation, no data post-treatment like with strain gages
- » Direct and perpetual access to the data (**perpetual mechanical memory**)
- » **Non-stop recording of data:** when the structure is in service but also when it is stored, transported etc.
- » Discretion: **zero electric nor magnetic emission**
- » Insensible to radiation, **fully electro-magnetic compatible**
- » Compliant with **explosive and pyrotechnic environments**

Sectors



Contacts

business@silmach.com

SilMach S.A. Bâtiment Usitech
16 rue Sophie Germain
25000 Besançon, France

www.silmach.com

